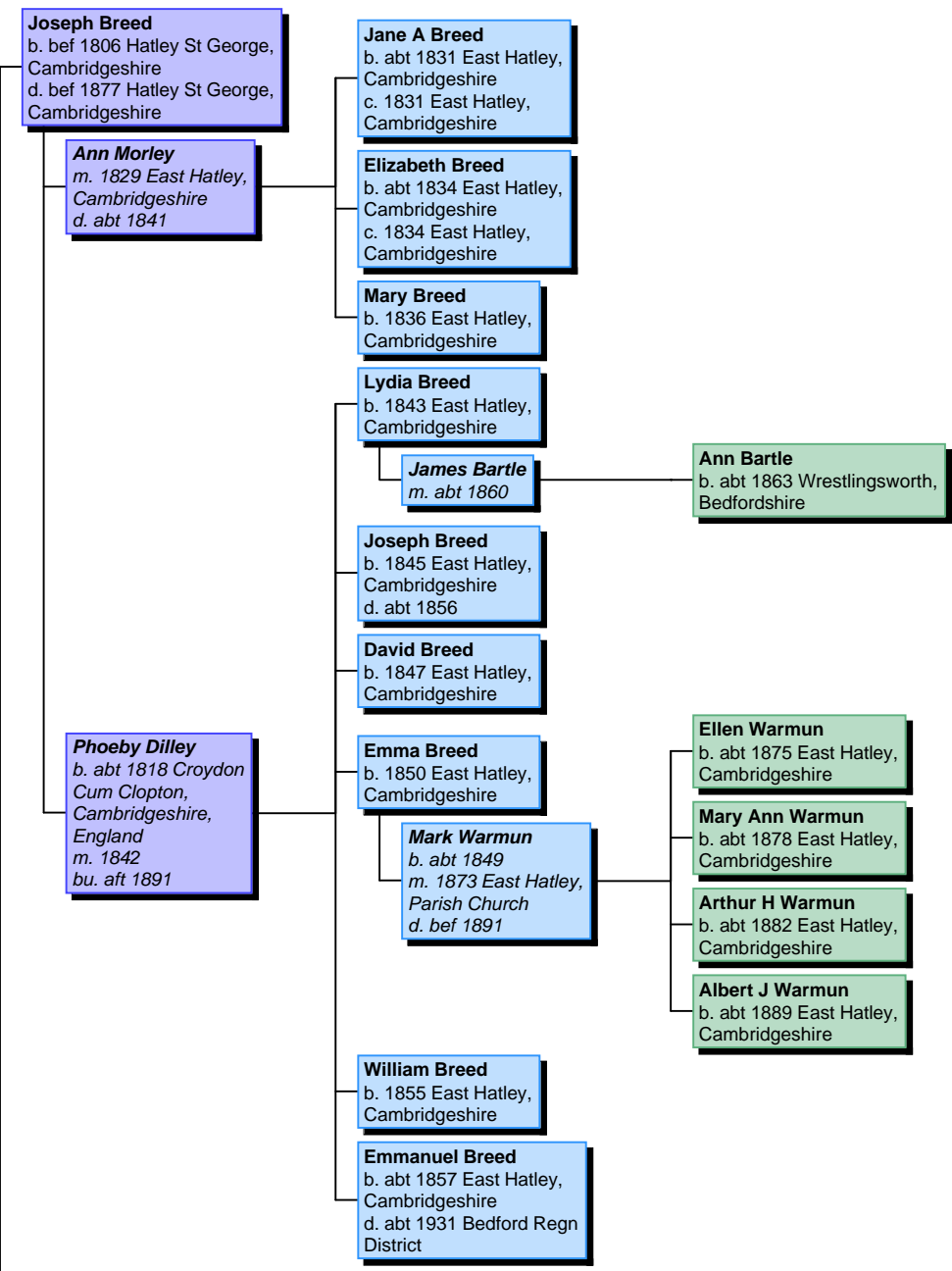


## Descendants of William Breed



**David Breed**  
b. 1836 East Hatley,  
Cambridgeshire  
c. 1836 East Hatley,  
Cambridgeshire  
d. 1888 Edmonton, London

**Henry Breed**  
b. bef 1864 Orwell,  
Cambridgeshire  
c. 1864 Orwell,  
Cambridgeshire  
d. bef 1864 Orwell,  
Cambridgeshire

**Mary Anne Breed**  
b. bef 1865 Orwell,  
Cambridgeshire  
c. 1865 Orwell,  
Cambridgeshire

**Ernest Breed**  
b. bef 1866 Orwell,  
Cambridgeshire  
c. 1866 Orwell,  
Cambridgeshire  
d. abt 1939 Cambridge Regn  
District

**Arthur George Breed**  
b. 1862 Orwell,  
Cambridgeshire  
c. 1862 Orwell,  
Cambridgeshire  
d. abt 1943 Edmonton,  
London

**Mary A Prentice**  
b. 3 q 1862 City of  
London  
m. 3 q 1881 Edmonton,  
London

**George A Breed**  
b. abt 1884 Edmonton,  
London

**Albert Breed**  
b. abt 1885 Tottenham,  
Middlesex

**Frederick Herbert Breed**  
b. 1888 Stratford, Essex  
d. 1891 Edmonton, London

**Ethel May Breed**  
b. 1890 Edmonton, London  
d. 1891 Edmonton, London

**Walter Leonard Breed**  
b. 1891 Tottenham, London,  
N15, England  
d. 1892 Edmonton, London

**Alice Sarah Breed**  
b. 1 q 1895 Tottenham,  
Middlesex

**Arthur Frederick Breed**  
b. 3 q 1896 Tottenham,  
Middlesex

**Herbert Alfred Breed**  
b. abt 1897 Tottenham,  
Middlesex

**Ada Ellen Breed**  
b. 1 q 1898 Tottenham,  
Middlesex

**Amelia Gill**  
b. 1843 Orwell,  
Cambridgeshire  
c. 1843 Orwell,  
Cambridgeshire  
m. 1862 Orwell,  
Cambridgeshire

**Sidney Breed**  
b. bef 1868 Orwell,  
Cambridgeshire  
c. 1868 Orwell,  
Cambridgeshire  
d. 1868 Orwell,  
Cambridgeshire

**Sidney Herbert Breed**  
b. bef 1869 Orwell,  
Cambridgeshire  
c. 1869 Orwell,  
Cambridgeshire

**Louisa Jane Riddler**  
b. 3 q 1870 Newton  
Abbot, Devon  
m. 3Q 1891 East  
Stonehouse Registration  
District

**Henry Breed**  
b. bef 1871 Orwell,  
Cambridgeshire  
c. 1871 Orwell,  
Cambridgeshire

**Jane Emma Hart**  
b. 2 q 1874 London  
Kingsland  
m. 3 q 1897 Edmonton,  
London

**Jane Mary Breed**  
b. 4 q 1899 Edmonton,  
London

**Susan Emma Breed**  
b. 4 q 1899 Edmonton,  
London

**Annie Maria Breed**  
b. 4 q 1872 Orwell,  
Cambridgeshire  
c. 1873 Orwell,  
Cambridgeshire

**Charles Prime**  
b. bef 1873 Orwell,  
Cambridgeshire  
c. 1873 Orwell,  
Cambridgeshire  
m. 2Q 1895 Edmonton,  
London

**Thomas Harold Prime**  
b. 1 q 1896 Tottenham,  
Middlesex

**Frank Charles Prime**  
b. 2 q 1900 Tottenham,  
London, N15, England

**Frank Breed**  
b. bef 1874 Orwell,  
Cambridgeshire  
c. 1874 Orwell,  
Cambridgeshire

**Susan Jane Breed**  
b. 1876 Orwell,  
Cambridgeshire  
c. 1876 Orwell,  
Cambridgeshire

**William Breed**  
b. 1838 Orwell,  
Cambridgeshire  
c. 1838 Orwell,  
Cambridgeshire  
d. bef 1840 Orwell,  
Cambridgeshire

**William Breed**  
b. 1840 Orwell,  
Cambridgeshire  
c. 1840 Orwell,  
Cambridgeshire  
d. abt 1840 Orwell,  
Cambridgeshire

**Sarah Breed**  
b. 1841 Orwell,  
Cambridgeshire  
c. 1841 Orwell,  
Cambridgeshire  
d. aft 1901

**Samuel Welch**  
*b. abt 1838*  
*m. 1869 Orwell,*  
*Cambridgeshire*  
*d. aft 1901*

**Charles Breed**  
b. 1844 Orwell,  
Cambridgeshire  
c. 1844 Orwell,  
Cambridgeshire  
d. 1844 Orwell,  
Cambridgeshire

**William Welch**  
b. abt 1873

**George Welch**  
b. abt 1875 Orwell,  
Cambridgeshire

**Ada Welch**  
b. abt 1877 Orwell,  
Cambridgeshire

**Frederick Welch**  
b. abt 1880 Orwell,  
Cambridgeshire

**Mary A Welch**  
b. abt 1882 Orwell,  
Cambridgeshire

**Charles Edward Breed**  
b. bef 1873 Orwell,  
Cambridgeshire  
c. 1873 Orwell,  
Cambridgeshire  
d. bef 1875 Orwell,  
Cambridgeshire

**Fanny Breed**  
b. 1875 Orwell,  
Cambridgeshire  
c. 1875 Orwell,  
Cambridgeshire  
d. 1955 Orwell,  
Cambridgeshire

**Ernest Alfred Waldock**  
*b. abt 1878*  
*m. 1904 Orwell,*  
*Cambridgeshire*

**Albert Breed**  
b. 1877 Orwell,  
Cambridgeshire  
c. 1878 Orwell,  
Cambridgeshire  
d. 1945 Addenbrookes  
Hospital, Cambridge

**Joseph Breed**  
b. 1846 Orwell,  
Cambridgeshire  
c. 1846 Orwell,  
Cambridgeshire  
d. 1906 Orwell,  
Cambridgeshire

**Elizabeth Storey**  
b. 1844 Barrington,  
Cambridgeshire  
c. Barrington,  
Cambridgeshire  
m. 1872 Orwell,  
Cambridgeshire  
d. 1885 Orwell,  
Cambridgeshire

**Eveline Ellis**  
b. abt 1879  
m. 1904 Kirtling, Wicken,  
Cambridgeshire  
d. 1952 Kirtling, Wicken,  
Cambridgeshire

**Constance Louisa Breed**

**Elizabeth Breed**  
b. bef 1880 Orwell,  
Cambridgeshire  
c. 1881 Orwell,  
Cambridgeshire

**Edward George Breed**  
b. 1881 Orwell,  
Cambridgeshire  
d. 1961 Great Eversden,  
Cambridgeshire

**Unknown**

**Leonard Joseph Breed**

**Rosetta Lindsey**  
b. abt 1884 Great  
Eversden,  
Cambridgeshire  
m. 1905 Congregational  
Chapel, Great Eversden,  
Cambs.  
d. 1951 Addenbrookes  
Hospital, Cambridge

**Joseph Leonard Breed**  
b. 1906 Chesterton,  
Cambridgeshire  
d. 1975 1 Harding Way,  
Histon, Cambridgeshire

**George Breed**  
b. 1884 Orwell,  
Cambridgeshire  
c. 1884 Orwell,  
Cambridgeshire  
d. 1960 Lilac Farm, High  
Street, Orwell, Cambridgeshire

**Alice Priscilla Goates**  
b. abt 1893 Orwell,  
Cambridgeshire  
m. 1917 Orwell,  
Cambridgeshire  
d. 1966 Orwell,  
Cambridgeshire

**Roland Joseph Breed**  
b. 1918 Orwell, Caxton &  
Arrington  
d. abt 2000

**Clifford George Breed**  
b. 1927

**Arthur John Breed**  
b. 1885 Orwell,  
Cambridgeshire  
c. 1885 Orwell,  
Cambridgeshire  
d. 1945 Aylesbury,  
Buckinghamshire

**Gerald Raymond Breed**

**Beryl Kathleen Breed**  
b. 1913 Buckingham, Bucks  
d. 1929 Aylesbury,  
Buckinghamshire

**William Breed**  
b. bef 1808 East Hatley,  
Cambridgeshire  
c. 1808 East Hatley,  
Cambridgeshire  
d. 1870 Orwell,  
Cambridgeshire

**Sarah Arber Bullen**  
b. bef 1816 Wimpole,  
Cambridgeshire  
c. 1816 Wimpole,  
Cambridgeshire  
m. 1835 Wimpole,  
Cambridgeshire  
d. 1900 Caxton,  
Cambridgeshire

**George Breed**  
b. 1847 Orwell,  
Cambridgeshire  
c. 1847 Orwell,  
Cambridgeshire  
d. 1929 Orwell,  
Cambridgeshire

**Rebecca Serjeant**  
b. abt 1850 Orwell,  
Cambridgeshire  
m. 1873 Orwell Parish  
Church, Cambridgeshire  
d. 1902 Orwell,  
Cambridgeshire

**Beatrice Maud Rayner**  
b. 1886 Dereham,  
Norfolk  
m. 1910 Parish Church,  
East Dereham, Norfolk  
d. 1965 Aylesbury,  
Buckinghamshire

**Denis Rowland Breed**  
b. 1915 Buckingham, Bucks  
d. 2004

**Elizabeth Ann Breed**  
b. bef 1875 Orwell,  
Cambridgeshire  
c. 1875 Orwell,  
Cambridgeshire  
d. bef 1882 Orwell,  
Cambridgeshire

**William John Breed**  
b. bef 1876 Orwell,  
Cambridgeshire  
c. 1876 Orwell,  
Cambridgeshire  
d. 1959 Cambridge

**?? Proctor**  
m. abt 1902

**Violet Washington Breed**

**Reginald Breed**  
b. 1877 Orwell,  
Cambridgeshire  
c. 1877 Orwell,  
Cambridgeshire  
d. 1942 The Rosery, Meldreth,  
Cambridgeshire

**Margaret Murray**  
b. abt 1876  
m. 1906 St. John The  
Baptist Church, Croydon,  
Surrey

**E R Breed**

**May Breed**  
b. 1878 Orwell,  
Cambridgeshire  
c. 1878 Orwell,  
Cambridgeshire

**Frederick Charles  
Molony**  
b. abt 1868  
m. 1900 Orwell,  
Cambridgeshire

**Edmund Breed**  
b. bef 1880 Orwell,  
Cambridgeshire  
c. 1880 Orwell,  
Cambridgeshire  
d. 1964 Chesterton Hospital,  
Cambridge

**Mary Ann Welch**  
m. abt 1932

**Florence Breed**  
b. 1881 Orwell,  
Cambridgeshire  
c. 1881 Orwell,  
Cambridgeshire  
d. bef 1882 Orwell,  
Cambridgeshire

**Emily Ada Breed**  
b. bef 1883 Orwell,  
Cambridgeshire  
c. 1883 Orwell,  
Cambridgeshire

**Frederick George Flack**  
*b. abt 1879*  
*m. 1906 Orwell,*  
*Cambridgeshire*

**G A Flack**

**Nellie Beatrice Breed**  
b. 1885 Orwell,  
Cambridgeshire  
c. 1885 Orwell,  
Cambridgeshire

**Herbert Miller**  
*b. 3 q 1883*  
*m. 1915 Orwell,*  
*Cambridgeshire*

**James Breed**  
b. 1850 Orwell,  
Cambridgeshire  
c. 1850 Orwell,  
Cambridgeshire  
d. bef 1850 Orwell,  
Cambridgeshire

**Mary Jane Gill Breed**  
b. Orwell, Cambridgeshire  
c. 1869 Orwell,  
Cambridgeshire  
d. 1955 Huntingdon  
Registration District

**Joseph White**  
*b. 1866 Horsington,*  
*Lincolnshire, England,*  
*Great Britain*  
*m. 3 q 1891 Edmonton,*  
*London*

**Percy Edward White**  
b. 4 q 1891 St Pancras,  
London

**Leslie Joseph White**  
b. 4 q 1900 St Pancras,  
London

**William Breed**  
b. 1870 Orwell,  
Cambridgeshire  
c. 1870 Orwell,  
Cambridgeshire  
d. 1932 Huntingdon  
Registration District

**Alfred Breed**  
b. 1851 Orwell,  
Cambridgeshire  
c. 1852 Orwell,  
Cambridgeshire  
d. 1937 Orwell,  
Cambridgeshire

**Vida Irene Breed**  
b. 1899 Orwell,  
Cambridgeshire

**Margery Mercia Breed**  
b. 1902 Orwell,  
Cambridgeshire

**Lois Gill**  
b. bef 1852 Orwell,  
Cambridgeshire  
c. 1852 Orwell,  
Cambridgeshire  
m. 1870 Orwell Parish  
Church, Cambridgeshire  
d. 1933 Orwell,  
Cambridgeshire

**Betsy Prime**  
b. 3 q 1874 Orwell,  
Cambridgeshire  
c. 1875 Orwell,  
Cambridgeshire  
m. 1898 Orwell,  
Cambridgeshire  
d. 1939 Lotfield Street,  
Orwell, Cambridgeshire

**Emma Breed**  
b. 1872 Orwell,  
Cambridgeshire  
d. 1872 Orwell,  
Cambridgeshire

**Eliot Breed**  
b. 1878 Orwell,  
Cambridgeshire  
c. 1879 Orwell,  
Cambridgeshire  
d. abt 1956 Stevenage,  
Hertfordshire

**Alice Maud  
Wilson-Leary**  
b. 1879 London  
m. 1902 Parish Church,  
Kentish Town, London  
d. 1930 Walthamstow,  
London

**Harold Stanley Breed**  
b. 1902 London  
d. 1966 Stevenage,  
Hertfordshire

**Gladys Winifred Breed**  
b. 1904  
d. 1997 Newport Pagnell,  
Bucks

**Nora Breed**  
b. 1882 Orwell,  
Cambridgeshire  
c. 1882 Orwell,  
Cambridgeshire  
d. 1970

**Elsie Millicent Breed**  
b. 1892 Orwell,  
Cambridgeshire  
c. 1892 Orwell,  
Cambridgeshire  
d. 1950

(--)  
**Bragg**

**Peggy Bragg**

(--)  
**Clark**  
m. 2Q 1922 Paddington  
Registration District

**Peter Clark**

**Julia Anne Breed**  
b. 1874 Orwell,  
Cambridgeshire  
c. 1874 Orwell,  
Cambridgeshire  
d. 1947 Orwell,  
Cambridgeshire

**John James Breed**  
b. 1854 Orwell,  
Cambridgeshire  
c. 1854 Orwell,  
Cambridgeshire  
d. 1936 Orwell,  
Cambridgeshire

**Hephzibah Gill**  
b. 1855 Orwell,  
Cambridgeshire  
c. 1855 Orwell,  
Cambridgeshire  
m. 1873 Orwell Parish  
Church, Cambridgeshire  
d. 1941 Orwell,  
Cambridgeshire

**Sarah Anne Breed**  
b. 1876 Orwell,  
Cambridgeshire  
c. 1876 Orwell,  
Cambridgeshire

**John Philp**

**Winifred Philp**  
b. 1899

**Jean Philp**

**Albert Philp**

**Jeanette Ann Breed**  
b. bef 1879 Orwell,  
Cambridgeshire  
c. 1879 Orwell,  
Cambridgeshire  
d. 1950 High Street, Orwell,  
Cambridgeshire

**Annie Breed**  
b. 1881 Orwell,  
Cambridgeshire  
c. 1881 Orwell,  
Cambridgeshire  
d. 1964 Eltham, London

**Fred Ash**  
b. 1875 Seavington St  
Mary, Somerset  
m. 1902 Orwell,  
Cambridgeshire  
d. 1954 Eltham, London

**Frederick John Ash**  
b. 1902 Camberwell, London  
c. 1906 Holy Trinity, Eltham  
d. 1985 Farnborough, Kent

**Albert Ash**  
b. 1904 Eltham, London  
d. 1974 Canada

**Sidney John Breed**  
b. 1891 Orwell,  
Cambridgeshire  
c. 1891 Orwell,  
Cambridgeshire  
d. 1957 Orwell,  
Cambridgeshire

**Flora Unknown**  
b. 1892  
m. 1914 Friern Barnet  
Parish Church  
d. 1982 Addenbrookes  
Hospital, Cambridge

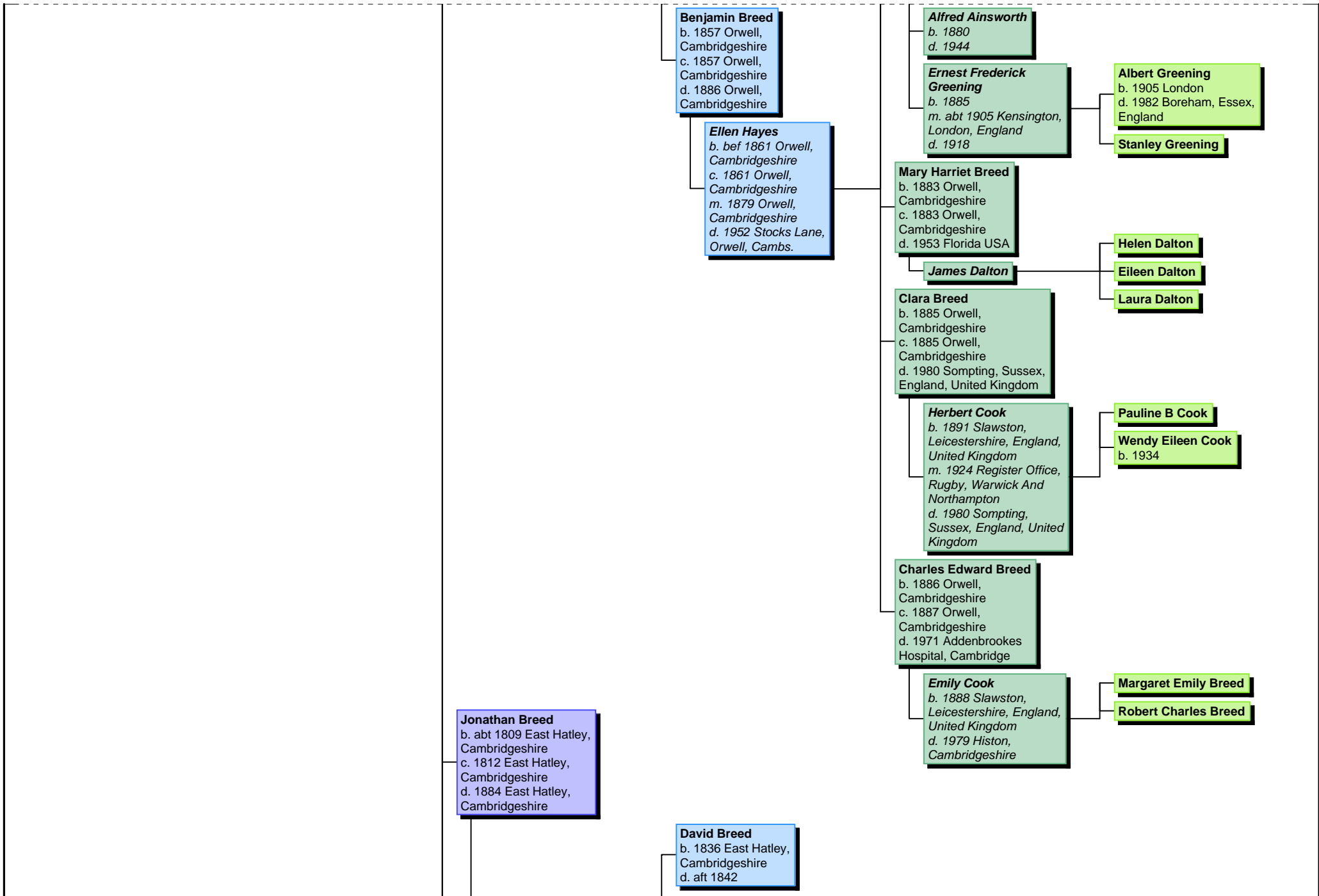
**Connie May Breed**  
b. 1914 Orwell,  
Cambridgeshire

**Eliza Ann Breed**  
b. 1880 Barrington,  
Cambridgeshire  
c. 1880 Orwell,  
Cambridgeshire  
d. 1952

**Unknown**

**?? (---)**

**Emma Breed**  
b. 1881 Orwell,  
Cambridgeshire  
c. 1882 Orwell,  
Cambridgeshire  
d. abt 1956 Rugby,  
Warwickshire, England, Great  
Britain



**William Breed**  
b. abt 1750

**Sarah Woodwell**  
b. bef 1752 Arlesey,  
Bedfordshire  
c. 1752 Arlesey,  
Bedfordshire  
m. 1775 Arlesey,  
Bedfordshire  
d. bef 1787

**William Breed**  
b. bef 1781 Arlesey,  
Bedfordshire  
c. 1781 Arlesey, Bedfordshire  
d. 1842 East Hatley,  
Cambridgeshire

**Mary Garratt**  
b. abt 1784 Great  
Gransden,  
Huntingdonshire  
m. 1804 Hatley St  
George, Cambridgeshire  
d. 1869 East Hatley,  
Cambridgeshire

**Jane Chapman**  
b. bef 1816 Croydon  
Cum Clopton,  
Cambridgeshire,  
England  
c. 1816 Croydon Cum  
Clopton,  
Cambridgeshire,  
England  
m. 1835 Croydon Cum  
Clopton,  
Cambridgeshire,  
England  
d. bef 1836 Hatley St  
George, Cambridgeshire

**William Breed**  
b. 1843 East Hatley,  
Cambridgeshire  
d. abt 1910 Caxton  
Registration District,  
Cambridgeshire

**Ellen Haskin Bailey**  
b. abt 1845 Tottenham,  
London, N15, England  
m. 1867 Tottenham,  
London, N15, England

**Ellen Breed**  
b. 1869 Tottenham, London,  
N15, England

**William Jonathan Breed**  
b. 1870 Friern Barnet, Barnet,  
Hertfordshire

**Maria J Catlin**  
b. 2 Q 1866 Islington,  
London  
m. 4 q 1890 Islington,  
London

**Ernest Breed**  
b. abt 1893 Friern Barnet,  
Barnet, Hertfordshire

**Ellen Breed**  
b. abt 1895 Woodfield

**Frederick Breed**  
b. abt 1897 Tottenham,  
London, N15, England

**Lilian Breed**  
b. abt 1900 Friern Barnet,  
Barnet, Hertfordshire

**Edwin J Breed**  
b. abt 1871 Friern Barnet,  
Barnet, Hertfordshire

**George F Breed**  
b. abt 1875 Friern Barnet,  
Barnet, Hertfordshire

**Joseph T Breed**  
b. abt 1878 Friern Barnet,  
Barnet, Hertfordshire

**Matilda Breed**  
b. abt 1881 Friern Barnet,  
Barnet, Hertfordshire

**Benjamin Howard Breed**  
b. abt 1884 Friern Barnet,  
Barnet, Hertfordshire

**Alice Breed**  
b. abt 1886 Friern Barnet,  
Barnet, Hertfordshire

**Annie Breed**  
b. abt 1888 Friern Barnet,  
Barnet, Hertfordshire

**Jonathan Breed**  
b. 1845 East Hatley,  
Cambridgeshire  
d. abt 1902 Cambridgeshire

**Mary Ann Breed**  
b. 1847 East Hatley,  
Cambridgeshire

**Emma Ellen Breed**  
b. 1874 East Hatley,  
Cambridgeshire  
d. 1877 East Hatley,  
Cambridgeshire

**Frederick John Breed**  
b. 1875 East Hatley,  
Cambridgeshire  
d. 1898 Lucknow Station  
Military Hospital India

**Rosa Jane Breed**  
b. 1877 East Hatley,  
Cambridgeshire  
d. 1968 Tottenham, London,  
N15, England

**Walter Dancy**  
*b. 1877 Middlesex,  
London, England  
m. 1903 Holy Trinity  
Church, Kilburn  
d. 1949 5 Eastbourne  
Road, Tottenham  
London England*

**Elizabeth Ann Breed**  
b. 1880 East Hatley,  
Cambridgeshire  
d. 1968 Bush Hill Park,  
Edmonton

**Jesse Dancy**  
*b. 3 Q 1879 Middlesex,  
London, England  
m. 1908  
d. 1958 Tottenham,  
London, N15, England*

**James Breed**  
b. 1849 East Hatley,  
Cambridgeshire  
d. 1923 Chalton,  
Moggerhanger, Bedfordshire

**Emma Payne**  
*b. 1853 Croydon Cum  
Clopton,  
Cambridgeshire,  
England  
c. 1853 Croydon Cum  
Clopton,  
Cambridgeshire,  
England  
m. 1873 Croydon Parish  
Church, Cambridgeshire  
d. 1928 Chalton Terrace,  
Moggerhanger  
Bedfordshire*

**Walter James Dancy Breed**  
b. Tadlow, Cambridgeshire  
d. 1988 Blunham,  
Bedfordshire, England

**Frederick John Dancy**  
b. 1904 Kilburn, London  
d. 1958 Enfield Middlesex  
England

**Marjorie Eleanor Dancy**  
b. 1905 53 Maygrove Road,  
Kilburn London England  
d. 1976 Tottenham, London,  
N15, England

**Winifred Ela Dancy**  
b. 1908 Kilburn London  
England  
c. aft 1908 73 Messina  
Avenue, Kilburn, Nw6,  
England  
d. 1984 Cricklewood London  
England

**Ethel May Dancy**  
b. 1910 Hampstead, Camden  
d. 1969 Palmers Green  
London England

**Eileen Dancy**  
b. 1909 Hampstead, London  
d. 1987 Bush Hill Park,  
Edmonton

**Phyllis Dancy**  
b. 1910  
d. 1970 Chase Farm Hospital,  
Enfield

**Ruth Rippon**  
b. bef 1818 Bourn,  
Cambridgeshire  
c. 1818 Bourn,  
Cambridgeshire  
m. 1842 East Hatley,  
Parish Church  
d. 1881 Addenbrookes  
Hospital, Cambridge

**Herbert James Breed**  
b. 1882 Hatley St George,  
Cambridgeshire  
c. aft 1885  
d. 1971 Bedford South Wing  
Hospital

**Alice Elizabeth Baxter**  
b. 1889 St Neots, Hunts  
m. 1909 St Neots,  
Huntingdonshire  
d. 1969 Chesterton  
Hospital, Cambridge

**Mary Ann Breed**  
b. 1885 Hatley,  
Cambridgeshire  
d. 1977 Brook Hospital,  
Eltham

**Charles Frederick  
Hewitt**  
b. 1876 Newington,  
Surrey, England  
m. 1908 St James Parish  
Church, West  
Hampstead, Middlesex  
d. 1962 Brook Hospital,  
Eltham

**Mary Jane Breed**  
b. 1874 Lawns, Wakefield,  
York

**Ellen Breed**  
b. 1876 Lawns, Wakefield,  
York

**John Breed**  
b. 1877 Robin Hood, York

**Elizabeth Breed**  
b. 1879 Robin Hood, York

**Harriet Ann Breed**  
b. 1880 Robin Hood, York

**Herbert Jesse Dancy**  
b. 1919  
d. 1982 Royal Free Hospital,  
Hampstead

**Ethel Eva Elizabeth Breed**  
b. 1910 Moggerhanger,  
Sandy, Bedfordshire, England  
d. 1999 St. Neots,  
Huntingdonshire, England

**Hilda Mary Breed**  
b. 1915 St Neots,  
Huntingdonshire  
d. 1986 Hinchingsbrook  
Hospital, Huntingdon,  
Cambridgeshire

**Elsie May Breed**

**Frederick George Breed**

**Eileen Margaret Breed**

**Ivy Constance Hewitt**  
b. 1908  
d. 1992 Worthing, West  
Sussex

**Leonard Charles Hewitt**  
b. 1910 Camberwell, London  
c. 1925 Baptist Chapel, Queen  
Street, Erith, Kent  
d. 1988 Bexleyheath, Kent

**Frederick George Hewitt**  
b. 1912  
d. 1999 Worthing, West  
Sussex

**Violet Gladys Mary Hewitt**

**Garrott Breed**  
b. 1850 East Hatley,  
Cambridgeshire  
d. 1900 Morley, Yorkshire

**Eliza Yarrow**  
b. abt 1855 Tadlow,  
Cambridgeshire  
m. abt 1873 Wakefield,  
Yorkshire, England,  
Great Britain  
d. 1928 Morley

**David Breed**  
b. 1853  
d. abt 1933 Huntingdon  
Registration District

**Elizabeth Whitby**  
b. abt 1853  
m. 1873 East Hatley,  
Cambridgeshire  
d. abt 1875

**Frederick Breed**  
b. 1855 East Hatley,  
Cambridgeshire  
d. abt 1882 Wakefield,  
Yorkshire, England, Great  
Britain

**Rebecca Breed**  
b. 1883 Robin Hood,  
Yorkshire

**Ruth Breed**  
b. 1884 Robin Hood,  
Yorkshire

**Unknown**

**Phoebe Breed**  
b. 1886 Robin Hood,  
Yorkshire

**Susanah Breed**  
b. 1888 Robin Hood,  
Yorkshire

**Martha Breed**  
b. 1890 Robin Hood,  
Yorkshire

**Frederick Breed**  
b. 1892 Robin Hood,  
Yorkshire  
d. Morley

**James Breed**  
b. 1894  
d. 1900

**Robert William Breed**  
b. 1896 Lingwell Gate,  
Yorkshire

**Herbert Breed**  
b. 1899 Dewsbury, Yorkshire,  
England, Great Britain  
d. 1900 Dewsbury, Yorkshire,  
England, Great Britain

**Albert (Arthur) Breed**  
b. 1873 East Hatley,  
Cambridgeshire

**William John Breed**  
b. 1874 East Hatley,  
Cambridgeshire  
d. 1875 East Hatley,  
Cambridgeshire

**Albert Breed**  
b. 1877 Alverthorpe Cum  
Thornes, Wakefield, Yorkshire

**?? Bates**

**Eliza Breed**  
b. 1906 Wakefield, Yorkshire,  
England, Great Britain

**Edna May Breed**

**Eliza Winterburn**  
b. abt 1854 Methley,  
Yorkshire, England,  
Great Britain  
m. abt 1876 Wakefield,  
Yorkshire, England,  
Great Britain  
d. aft 1901

**Mary Ann Breed**  
b. 1880 Alverthorpe Cum  
Thornes, Wakefield, Yorkshire

**Edward Arthur Moule**  
b. 1906 80 Tamworth Road,  
Croydon, Surrey  
d. 1998

**Lilian Alice Moule**

**Frederick Albert Moule**  
b. 1913 27 Lowfield Road,  
Kilburn, London Nw6  
d. 1993 Stoke Mandeville  
Hospital, Aylesbury,  
Buckinghamshire

**Violet Moule**

**Doris May Moule**

**Leslie Moule**  
b. 1920 27 Lowfield Road,  
Kilburn, London Nw6  
d. 1976

**Ida Florence Moule**

**Stanley Moule**  
b. 1924  
d. 1979

**Frederick William Moule**  
b. 1882 Thornes, Yorkshire,  
UK  
d. 1970 Hampstead General  
Hospital, London, Nw3

**Rebecca Blackman**  
b. 1883 40 Netherwood  
Street, London, Nw6  
d. 1977 27 Lowfield  
Road, Kilburn, London  
Nw6

**Susannah Breed**  
b. 1858 East Hatley,  
Cambridgeshire

**Fred Moule**  
b. 1860 Croydon Cum  
Clopton,  
Cambridgeshire,  
England  
m. 1882 Parish Church,  
Thornes, Yorkshire,  
England, Great Britain

**Ida Florence Moule**  
b. 1885 Croydon Cum  
Clopton, Cambridgeshire,  
England

**Harry A Moule**  
b. 1888 Croydon Cum  
Clopton, Cambridgeshire,  
England

**Edward Moule**  
b. 1890 Croydon Cum  
Clopton, Cambridgeshire,  
England

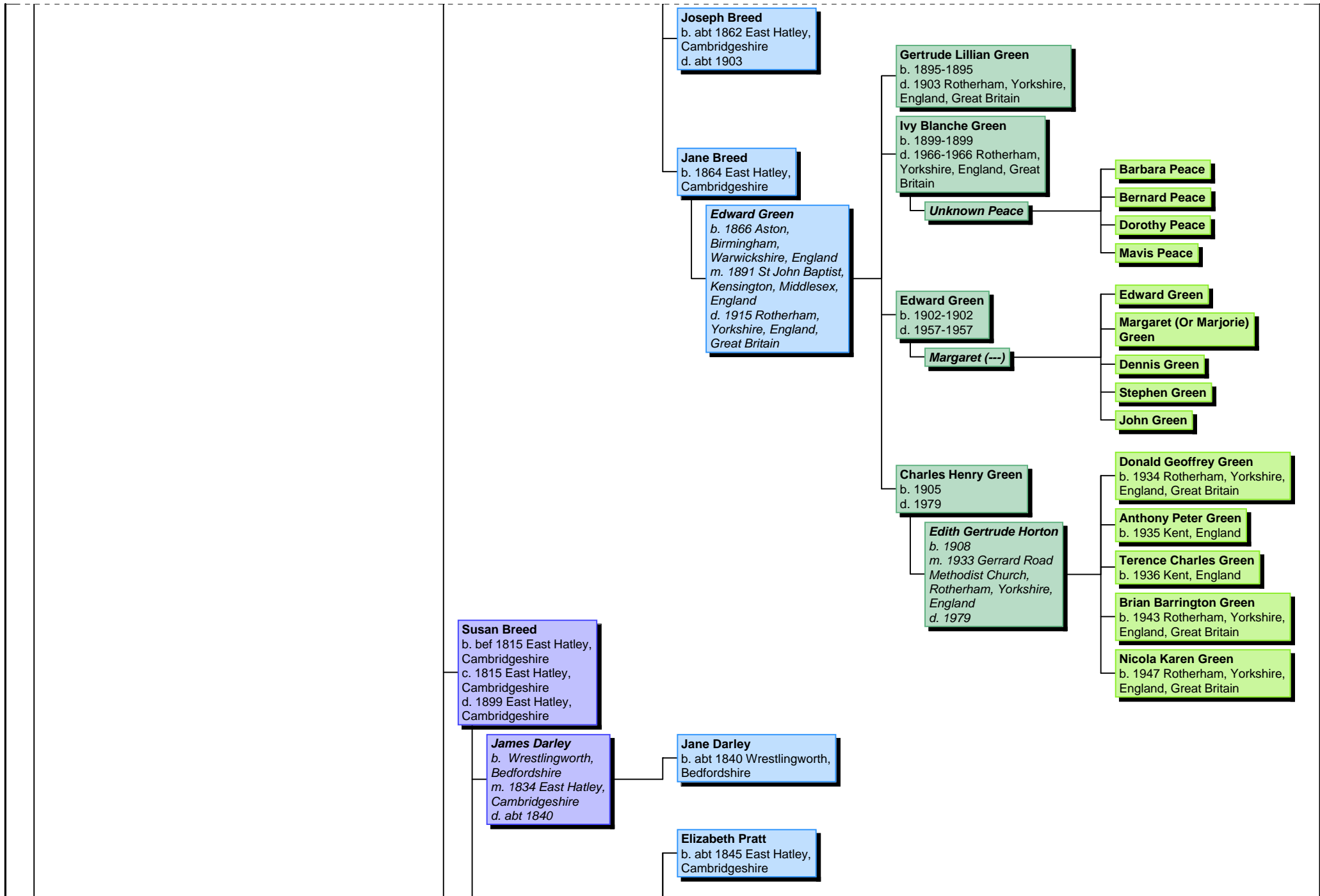
**Albert Rowland Moule**  
b. 1896 Edgware, Middlesex

**Charles James Moule**  
b. 1897 Hampstead, London  
d. bef 1983 Edgware General  
Hospital

**Rose May Roberts**  
b. 1898  
d. 1969

**Jeanne Alma Marian Moule**

**Rose Ellen Moule**  
b. aft 1901



**John Pratt**  
b. abt 1801 Wyboston,  
Bedfordshire  
m. abt 1844  
d. 1882 East Hatley,  
Cambridgeshire

**Eliza Pratt**  
b. abt 1848 East Hatley,  
Cambridgeshire

**John Pratt**  
b. abt 1850 East Hatley,  
Cambridgeshire

**Hannah Pratt**  
b. 1851 East Hatley,  
Cambridgeshire

**James Pratt**  
b. abt 1853 East Hatley,  
Cambridgeshire

**Sarah Pratt**  
b. abt 1856 East Hatley,  
Cambridgeshire

**Jane Breed**  
b. bef 1817 East Hatley,  
Cambridgeshire  
c. 1817 East Hatley,  
Cambridgeshire

**Margaret Sarah Breed**  
b. abt 1848 Hatley St George,  
Cambridgeshire

**Amos Chapman**  
b. abt 1843 Croydon  
Cum Clopton,  
Cambridgeshire,  
England  
m. 1868 East Hatley,  
Cambridgeshire

**Henry Chapman**  
b. 1869

**William Chapman**  
b. abt 1869 Croydon Cum  
Clopton, Cambridgeshire,  
England

**Frederick Chapman**  
b. abt 1870 Croydon Cum  
Clopton, Cambridgeshire,  
England

**Ada Chapman**  
b. abt 1880

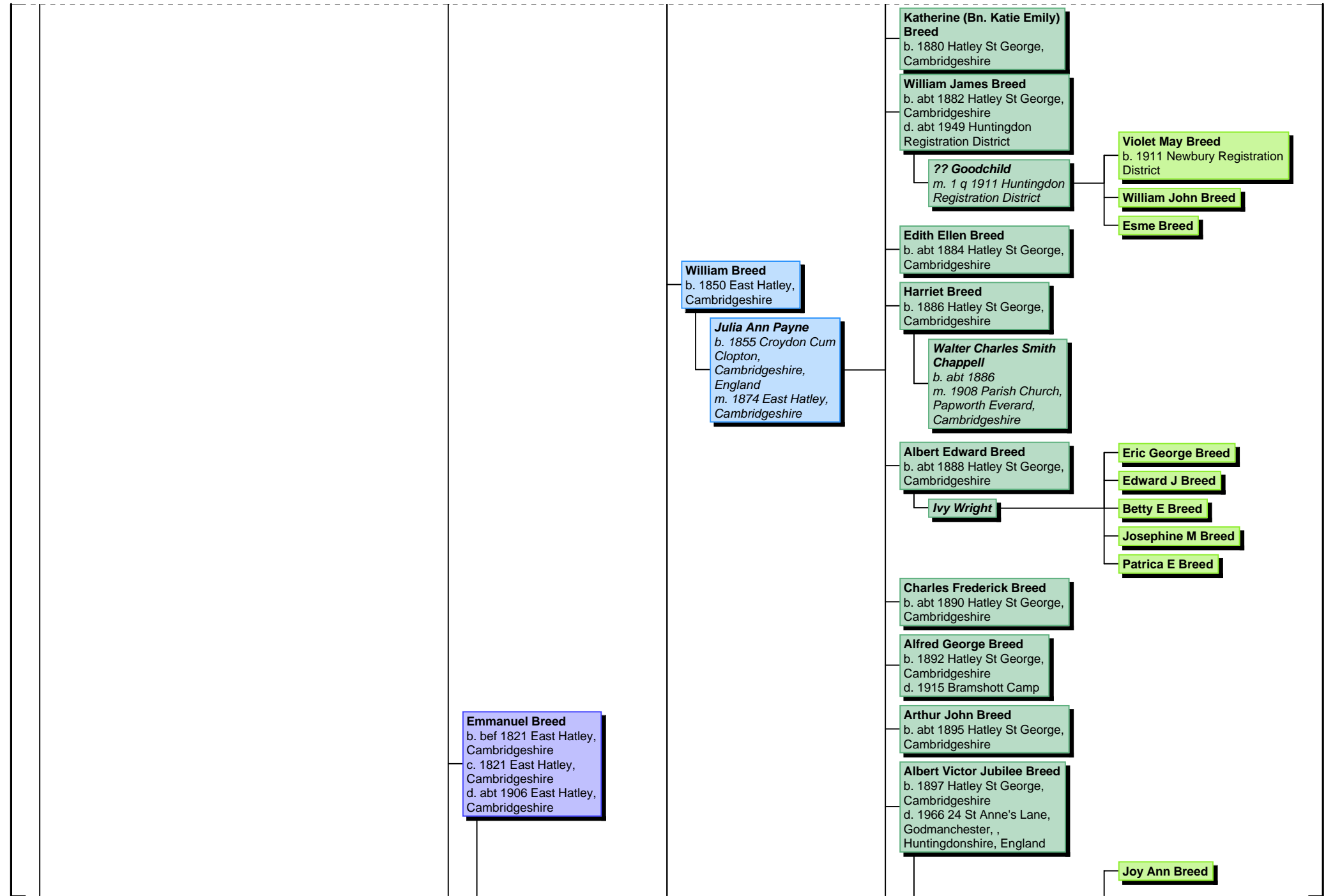
**Alice Breed**  
b. 1876 East Hatley,  
Cambridgeshire

**Fanny Breed**  
b. 1877 Hatley St George,  
Cambridgeshire

**Benjamin James  
Musgrove Bitchener**  
b. abt 1871  
m. 1901 Hatley St  
George, Cambridgeshire

**Sarah Jane Breed**  
b. 1878 Hatley St George,  
Cambridgeshire

**? Jones**



**William Breed**  
b. 1850 East Hatley,  
Cambridgeshire

**Julia Ann Payne**  
b. 1855 Croydon Cum  
Clopton,  
Cambridgeshire,  
England  
m. 1874 East Hatley,  
Cambridgeshire

**Katherine (Bn. Katie Emily) Breed**  
b. 1880 Hatley St George,  
Cambridgeshire

**William James Breed**  
b. abt 1882 Hatley St George,  
Cambridgeshire  
d. abt 1949 Huntingdon  
Registration District

**?? Goodchild**  
m. 1 q 1911 Huntingdon  
Registration District

**Edith Ellen Breed**  
b. abt 1884 Hatley St George,  
Cambridgeshire

**Harriet Breed**  
b. 1886 Hatley St George,  
Cambridgeshire

**Walter Charles Smith Chappell**  
b. abt 1886  
m. 1908 Parish Church,  
Papworth Everard,  
Cambridgeshire

**Albert Edward Breed**  
b. abt 1888 Hatley St George,  
Cambridgeshire

**Ivy Wright**

**Charles Frederick Breed**  
b. abt 1890 Hatley St George,  
Cambridgeshire

**Alfred George Breed**  
b. 1892 Hatley St George,  
Cambridgeshire  
d. 1915 Bramshott Camp

**Arthur John Breed**  
b. abt 1895 Hatley St George,  
Cambridgeshire

**Albert Victor Jubilee Breed**  
b. 1897 Hatley St George,  
Cambridgeshire  
d. 1966 24 St Anne's Lane,  
Godmanchester, ,  
Huntingdonshire, England

**Violet May Breed**  
b. 1911 Newbury Registration  
District

**William John Breed**

**Esme Breed**

**Eric George Breed**

**Edward J Breed**

**Betty E Breed**

**Josephine M Breed**

**Patricia E Breed**

**Emmanuel Breed**  
b. bef 1821 East Hatley,  
Cambridgeshire  
c. 1821 East Hatley,  
Cambridgeshire  
d. abt 1906 East Hatley,  
Cambridgeshire

**Joy Ann Breed**

**Sarah Houseden**  
b. 1827 Hatley St  
George, Cambridgeshire  
m. abt 1848  
d. 1884 East Hatley,  
Cambridgeshire

**Irene Ursula Haynes**  
b. 1901  
m. 1935 All Saints Parish  
Church, St Ives,  
Huntingdonshire  
d. 1982 Ellesmere Port,  
Wirral, Cheshire,  
England

**Florence May Breed**  
b. 1901 Hatley St George,  
Cambridgeshire

**Alfred Cotton**

**Adrian Cotton**

**Fanny Breed**  
b. 1852 East Hatley,  
Cambridgeshire

**Thomas Harben**  
m. 1876 Tadlow,  
Cambridgeshire

**Edward George Breed**  
b. 1883 Gamlingay,  
Cambridgeshire  
d. 1887

**John Breed**  
b. abt 1885 Hatley St George,  
Cambridgeshire

**Florence Breed**  
b. abt 1887 Hatley St George,  
Cambridgeshire

**George Breed**  
b. 1855 East Hatley,  
Cambridgeshire

**Sarah Jane Breed**  
b. abt 1889 Hatley St George,  
Cambridgeshire

**Sarah Bailey**  
b. abt 1857 Papworth St.  
Everard, Hunts  
m. 1879 Papworth  
Everard, Hunts

**John Herbert Taylor**  
b. abt 1885  
m. 1914 St Andrews  
Church, Islington

**Grace Breed**  
b. abt 1891 Hatley St George,  
Cambridgeshire

**Annie Breed**  
b. abt 1894 Hatley St George,  
Cambridgeshire

**Agnes Breed**  
b. 1895 Hatley St George,  
Cambridgeshire  
d. 1895

**Mabel Breed**  
b. abt 1897 Hatley St George,  
Cambridgeshire

**David Breed**  
b. 1857 East Hatley,  
Cambridgeshire

**Lizzie Breed**  
b. abt 1888 Offord, Hunts

**Emma (---)**  
b. abt 1860 London

**Charlie Breed**  
b. abt 1896 Great Paxton,  
Hunts

**Charles Breed**  
b. 1860 East Hatley,  
Cambridgeshire  
d. abt 1919 Caxton  
Registration District,  
Cambridgeshire

**Martha (---)**  
b. abt 1850 N Barford,  
Bedfordshire

**Mary Jane Breed**  
b. 4Q 1863 East Hatley,  
Cambridgeshire

**Charles Harben**  
b. abt 1849  
m. 1892 East Hatley,  
Parish Church

**Emily Elizabeth Breed**  
b. 1866 East Hatley,  
Cambridgeshire

**Albert Reuben Breed**  
b. abt 1873 Caxton  
Registration District,  
Cambridgeshire  
d. 1955 Folkstone Regn  
District

**David Breed**  
b. 1848 East Hatley,  
Cambridgeshire

**Emma Breed**  
b. 1851 East Hatley,  
Cambridgeshire  
d. 1903 Cirencester,  
Gloucestershire, England

**William Hinks**  
b. 1883 Cirencester,  
Gloucestershire, England

**Unknown**

**Michael Hinks**

**George Hinks**  
b. 1885 Cirencester,  
Gloucestershire, England

**Frederick Charles Hinks**  
b. 1886 Cirencester,  
Gloucestershire, England

